



Woolsthorpe Wind Farm Community Engagement Committee

Meeting date Friday 27 October 2023
Meeting time and location 10.30 am, Woolsthorpe Hall

1. Welcome

2. Attendees

Cr Jim Doukas (Chair)
Terri Barnes, Community Representative
Simon Poynton, Community Representative
James Taylor - Development Manager, Enerfin
Katelyn Nash – Planner, KLM Spatial

Vicki Askew-Thornton, Senior Energy Projects Liaison Officer, Moyne Shire (non-member)

3. Apologies

Glenn Britnell, Community Representative
John Murphy, Community Representative

4. Declarations of interest

Nil.

5. Minutes of previous meeting

Moved by Terri Barnes, seconded by Simon Poynton that the minutes of the CEC meeting held on 2 December 2022 be accepted. **CARRIED**

6. Business arising from previous Minutes

E/ICA will follow up on:

- **How close can agricultural aviation contractors fly to the turbines and anemometers (masts)?**

As agreed, the following response was provided by E/ICA after the meeting:
The aviation consultant has confirmed that there are no regulated requirements that ag pilots must observe. It is up to the individual pilot to practise a distance from obstacles that they believe is safe. The 'rule of thumb' understood to be used by ag pilots is twice the wingspan of the aircraft. Typical agricultural aircraft have a wing span of 15 m, therefore it would be suggested to maintain at least 30 m of separation

from obstacles. The project notes that a 150 m setback distance from the project boundary has been implemented for the siting of turbines and with blades 82 m in length, no part of any turbine will come within 68 m of the site boundary (more than double the rule of thumb distance). As for the permanent met mast, its tower sections will be painted in alternating colours (e.g. red and white, or the preferred safety colours of the day) and marker balls will be placed on the guy wires to ensure they are visible.

As such, neighbouring properties should be able to be serviced by agricultural pilots unaffected.

It may also be worth noting for local residents who might be concerned, that the wind conditions required for spraying/dusting need to be gentle, between 3 km/h and 15 km/h. Our consultant advised that any faster and pilots will stop because the conditions will result in ineffective spreading of fertiliser (and can risk fertiliser being carried onto the wrong field or even a different property). The cut in wind speeds at which the turbines start to spin is 10.8 km/h (or 3 m/s), so spraying might be expected to occur most commonly when turbines are not turning.

- **What role did the existing mast played in the background noise testing and predictions?**

Where will any future masts be located, and will they create new points of reference for post construction noise monitoring?

If so, will a new round of background noise measurements be required once any new masts are erected, before the wind farm is constructed?

Response: The mast collects wind data which the noise consultant considered when preparing the pre-construction noise assessment that was submitted with the permit amendment application.

The permanent met mast has not yet been installed.

Both masts will record wind data in the first six months which will be compared.

The turbines will also have wind monitoring equipment, but it won't be used for the operational noise monitoring program.

Once the micrositing is completed and the turbine layout finalised, the noise assessment report will be updated and resubmitted to the Department of Transport and Planning (DTP).

James will provide the CEC with an electronic copy of the amended permit. Council can arrange to have some hard copies provided to Terri.

7. Correspondence Incoming

Date received	Item	Attachment Number
20 October	Woolsthorpe Wind Farm October 2023 newsletter	1
Tabled at the meeting	Site layout micrositing	2
Tabled at the meeting	Questions from Bruce Keen via Terri Barnes. Enerfin and Council took these questions on notice and will provide responses to the CEC.	3

8. Correspondence Outgoing

Nil.

9. Reports

9.1 Project Update (Enerfin/ICA):

(Refer to **October Newsletter - Attachment 1**)

- Condition 3(o) of the amended permit requires turbines 01, 05 and 07 to be micro-sited, where possible, by up to 100 metres to reduce the visual impact from viewpoint 7 (centre of town). This process is currently underway. **(Refer to Attachment 2)**
Cr Doukas suggested that Condition 3(o) could have been included in the recent project newsletter.
- Simon noted that Condition 5 about offsite landscaping is very important to the neighbours of the wind farm site.
- Once micrositing is completed, the final turbine layout will need to be submitted to the Minister for endorsement. A range of other management and development plans will also need to be submitted to the Minister for endorsement, as listed in the amended permit. These are being progressed and this process may take around 6 months to complete.
- Council asked that the project website be updated as soon as possible with a copy of the amended permit, and for any endorsed plans to also be placed on the website as they are received from the Minister.

9.2 Community Representatives

- Questions submitted by Terri Barnes for Bruce Keen **(Attachment 3)**. Enerfin took these questions on notice and will provide responses to the CEC via email.
- Simon asked about aviation lighting, and the colour of the towers. James responded that the permit does not require turbines to have aviation lighting. The towers will be pale grey or another pale colour. Simon put forward the future possibility of one of the towers being painted as a community-art type project. James noted that any change to turbine colour would need to be approved by the Minister.

9.3 Council

- Council and the Department of Transport will be consulted during the process of updating the Traffic Management Plan.

10. General business

- It was suggested that the CEC could travel along the route of the distribution line after the next meeting.

11. Date of next CEC meeting: **Friday 1 December, 10.30am at the Woolsthorpe Hotel**



Minutes

Confirmed this / /

Chair

Minutes are to be registered in Moyne Shire's electronic document management system by the committee reporting officer immediately following the Minutes' confirmation and signing

CONFIRMED

Attachment 1: Project newsletter October 2023



1 MESSAGE FROM THE PROJECT TEAM

On September 15th, the Department of Transport and Planning approved our application to amend the Woolsthorpe Wind Farm planning permit to allow taller but fewer turbines.

Our Project Team would like to extend our thanks to everyone who participated in the process and also for patiently waiting for the outcome - we know that this was not easy for everyone.

There is still much to do. In the last few weeks, our team has been busy reviewing the report by the Planning Panel as well as the amended permit conditions. We are committed to ongoing discussions with the community as we prepare plans and documents to satisfy the permit conditions, noting the number of conditions to be met and constraints to be balanced.

Moyne Shire Council is recommending the CEC meetings so we look forward to visiting more regularly and structuring our communication with the community around these meetings, with additional one-on-one catch ups.

Anyone that has questions relating to the project, please reach out via email.

We are also pleased to report further about our community benefit programs and neighbour agreements.

IN THIS NEWSLETTER

- 1 - MESSAGE FROM THE PROJECT TEAM
- 2 - WHAT'S BEEN HAPPENING

CONTACT US



www.woolsthorpewindfarm.com

contactus.woolsthorpe@elecnor.com

Don't forget to sign up to our mailing list (at the project's website) for updates and more!



2 WHAT'S BEEN HAPPENING?

Evolution of the project and on-going workstreams

COMMUNITY

Since our newsletter in July last year our Project team has made many visits to Woolsthorpe. We had 4 formal Community Engagement Committee (CEC) meetings between July and December, many one-on-one meetings with near neighbours, and the Community Information Sessions that we held in September.

During each of our visits, we were able to engage in robust conversation about the project from which much useful feedback was received by the community. Our Project team was able to respond to concerns and seek additional information to provide greater peace of mind to the community. One such example was by conducting additional background noise monitoring at the Primary School and a Wickham Road residence.

During the public information sessions, our Project team met with interested members of the community and discussed the development plans and studies that we submitted as part of our application to amend the planning permit. Residents were primarily interested in the noise studies, the visual impact and community benefit scheme. Some residents noted concern in particular about the view of turbines from the township, of which our team has taken note. Within the limits of our 100 metre micro-siting allowance, from the approved turbine locations, we are endeavouring to move three turbines (WT-05, WT-07 and WT-01) to positions that will help obscure more of their view. We look forward to sharing further photomontages as this work progresses.

Pre-construction Community Benefit Fund

Woolsthorpe Wind Farm Project team was very pleased with the success of the pre-construction community benefit fund. Many great applications were received from which two initiatives/projects were awarded grant funding. Our Project team worked closely with our community representatives on the Community Engagement Committee to assess each of the projects, and we would like to thank each of the members who contributed. It was made clear, through our consultation, that the causes most important to the community were those that fostered and promoted social cohesion and community wellbeing. Whilst all submissions demonstrated strong merit, the winning projects excelled in this regard.

SUCCESSFUL APPLICANTS

- \$6,000 to Spring Creek Cricket Club for the purchase of a new ball machine.



Stephen Mirtschin, Spring Creek Cricket Club Vice President, commented:

"The Spring Creek Cricket Club values our sponsors and those who have supported our club from our infant stages. We look forward to continuing to build upon these relationships, with community-minded groups like the Woolsthorpe Wind Farm long into the future. There are a number of projects that the Spring Creek Cricket Club committee has ambitiously set out to achieve for the betterment of our volunteer-run, and community-based club. The Woolsthorpe Wind Farms' ambition to support the local community is a perfect match for us. We're confident that through this support and partnership with the Woolsthorpe Wind Farm we're a step closer to ensuring our club is set up to flourish well into the future and achieve its full potential."

- \$14,000 to the Woolsthorpe Recreation Reserve for upgrades to the kitchen facilities.



2 WHAT'S BEEN HAPPENING?

Evolution of the project and on-going workstreams

Operational Community Benefit Fund

The project team would like to re-affirm that the annual Community Benefit Fund (AUD\$60,000) will still be in place for the commercial life of the project, as previously discussed. It is intended to commence shortly after the Project begins construction. Grant applications will be received and advertised for the local community within 4 km of the Project to vote on. A Grants Committee (comprised of residents within 4 km of the project and WWF company members) will be set up to review applications, beneficiaries, and the community voting. Finally the Grants Committee will make recommendations to WWF who will determine the final project(s) and distribution of grant funds.

DEVELOPMENT

The amendment application went on public exhibition through September and received submissions from the community/public about the proposed change in the project's design. The technical merits of the application, and submitters concerns, were heard at a formal Planning Panel Hearing in February 2023.

On 15th of September, 2023, the Planning Department issued its approval for the project's amended design which was supported by the independent Planning Panel.

The Project team is now reviewing the newly issued permit conditions and planning panel report. Specifically, recommendations require the project to utilise its 100 metre micro-siting allowance (ability to make small changes in some turbine locations from the locations submitted in the application) to, where possible whilst considering other constraints, reduce impacts. Specifically, the team is investigating how it can move turbines WT-01, WT-05 and WT-07, to help obscure more of their view from the township (denoted as viewpoint 7). The team is also investigating how small changes in location can be made for turbines WT-03, WT-05, WT-07, WT-08, WT-12 and WT-13 to increase the distance of separation from potential treed habitat for avifauna.

As this review into the micro-siting occurs, coordination of various specialist inputs is being undertaken to ensure that documents / plans satisfy the permit conditions and are suitable for subsequent endorsement. At this stage, we do not have a specific timeframe to lodge documents, as we are working through the requirements.

Lastly, the model for the Neighbour Agreements has been determined. Financial compensation to near neighbours will take the form of a one-off payment and be determined by the number of turbines within 3.1 km of a near neighbour's dwelling. As communicated previously, final turbine locations will be confirmed following micrositing of the turbines (and subsequent endorsement of development plans by the Department of Planning). The exact amounts will be communicated to the landowner and the same model will apply to all.

CONNECTION

On the 30th of September 2022, the project obtained its letter of Offer to Connect from AEMO (Australian Electricity Market Operator).

In January 2023, both Woolsthorpe Wind Farm and Powercor (the electricity distribution network service provider) executed the project's connection contract (concerning the electrical design and construction works required to physically connect the Woolsthorpe Wind Farm into the Powercor electricity grid). It should be noted that there is work to do to finalise the connection workstream, primarily related to the change to more modern wind turbines (which is process expected to take 6-9 months). However, importantly, the milestone now recognises Woolsthorpe Wind Farm as a "committed generator" and secures the Project's place in the network.

The Project team will continue to engage with Powercor and AEMO to finalise the remaining approvals in the months ahead.



THANK YOU FROM THE WOOLSTHORPE PROJECT TEAM

Attachment 2: Site layout micrositing



Figure 1 Overview of Site layout with line of sight from township (Nicholson St) - approved turbine locations (grey), micrositing locations (blue), 100 metre micrositing allowance circle (red), white line representing line of sight from township (Nicholson St).

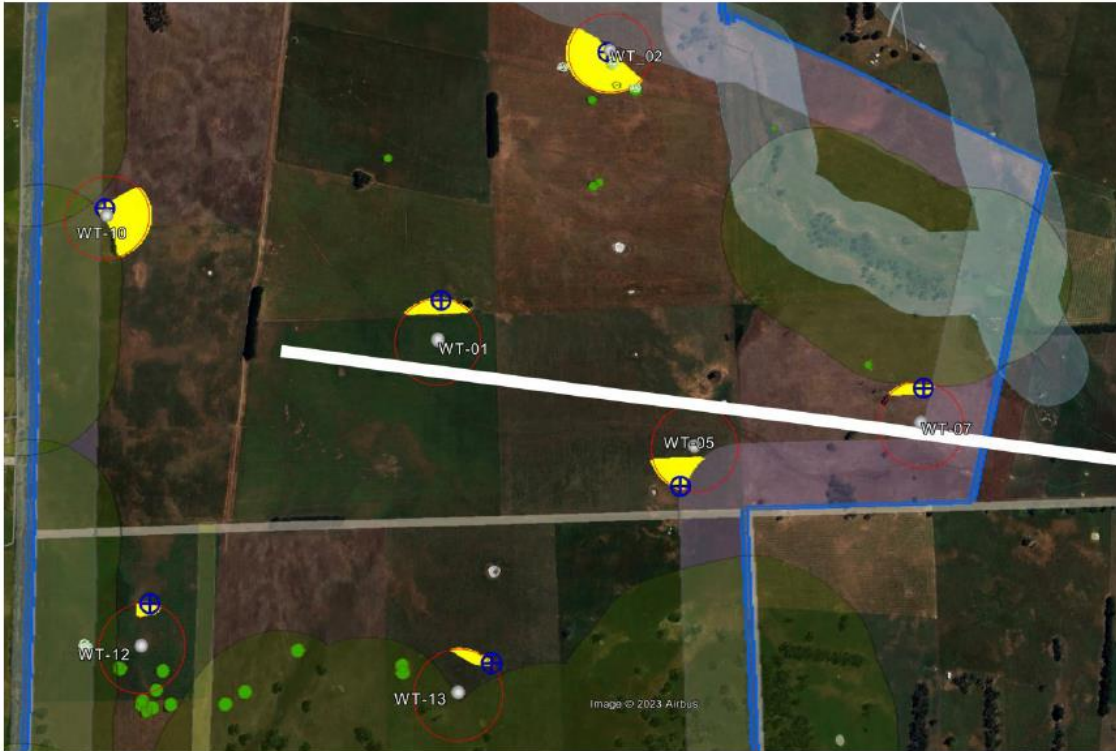


Figure 2 Close up of site layout - approved turbine locations (grey), 100 metre micro-siting allowance circle (red), micro-siting locations (blue), white line representing line of sight from township (Nicholson St).



Figure 3 View from township with plan to use micro-siting of turbine locations to help obscure more of the view of the turbines.

Attachment 3: Questions submitted by Bruce Keen

Questions to the Woolsthorpe Community Engagement Committee, 27th Oct 2023 as submitted by community members in response to the Woolsthorpe Wind Farm planning permit amendment .

1. When do you expect to begin construction?
2. How will the CEC communicate any important information or updates from the wind farm and its' associated contractors or interested parties? Will the minutes be put on the WWF website as the last one is still 2019? That is not communicating with the community. Will the CEC be holding regular community meetings prior to their main meeting to receive community feedback? What will be the frequency of CEC meetings in the future?
3. Will we as a concerned community receive a copy of the complaint investigation response plan before the commencement of any construction? Taking into account noise issues, traffic not adhering to the designated roads and TV reception issues etc. Will all contact details be put on the website for the broader community to access? Will the operator really try and help the community with these issues or play us as has been done throughout this process.
4. Would the wind farm be willing to turn off the turbines during a funeral service at the Woolsthorpe Cemetery as a sign of respect as is shown by the Murra Warra wind farm 25 ks north of Horsham, Victoria? A funeral was attended at the Sailors Home Cemetery on 31st July 2023 at 1300hrs by several Woolsthorpe locals. It was noted the 99 turbines were turning before the service and for the hour of the service they stopped being a distraction and were silent. Not one was turning. Many people commented on this sign of respect.
5. A resident of officer's Lane spoke of not being informed about the upgrade of the transmission lines on their lane overlooking their home. What are you going to do about their ignorance they have to this change in their landscape?
6. The community would like the transmission lines put underground, as recommended by the Black Saturday Royal Commission? The turbine heights, as well as Hawkesdale turbines are enough on our communities' landscape. What is the role of Vic Grid for our situation and are Enerfin in contact with them?
7. Does Enerfin/wind farm honestly believe the landscape mitigation programme is satisfactory and the answer to wind farm neighbours for the encroachment on their visual landscape? We will all then live happily ever after???? So as in the

permit, will neighbours receive visual material/plans of what will be an option for them before they accept the offer of landscaping? If the landscaping is taken up by a neighbour does that mean they accept the encroachment of the wind farm in their environment?

8. If a neighbour does not take up the landscape mitigation programme (even though it's voluntary) will this be held against them when it may come to a dispute? We do not trust you.
9. Does a community member have to sign a document waiving all rights to any complaint in the future if they take up an option of any type of compensation or landscape mitigation from Enerfin/ windfarm?
10. There is talk of several turbines being micro sighted to allow a view from Nicholson St to improve. We as a community would like to see photo montagues and discuss it before this is accepted. This is our landscape we will be looking at for the next 30 years.
11. This question is for The Moyne Shire and the Warrnambool City Council. Following the article on The Standard Newspaper website dated 21st Oct 2023 "Approval of wind farm blindsides" by Ben Silvestor. What are you going to do to defend our community after this obvious disregard for the residents of the Woolsthorpe and the surrounding communities?
12. Monique Patterson from The Standard Newspaper has a heading "Wind farm proponent hits back at criticism" on 26/10/23 The proponent states "No technical safety concerns were raised at hearings". - "Casa advises that the proposed WWF as presented, would have an unacceptable effect on the safety of existing and future air transport operations at Warrnambool Airport." Page 68 of the Planning Panel Report. Minimum Safe Altitude Agreements. Evidence and Submissions. Why can't the proponent be honest and transparent in their communications to the community as per the above Standard article. Is the CASA submission not a technical safety concern?
13. Will the proponents' expert, Tom Evans' evidence be adhered to; to reevaluate the noise levels for the turbines once they have been chosen, as per his statement page 59 in the Panel Hearing Report. Noise Assessment and Impacts. Evidence and submissions. "As is normal practice, he considered the noise levels should be reassessed once the turbine type and layout has been confirmed." Will the community be advised on this development?

14. Who is legally accountable and answerable for the final approval of the noise limits and their projections and monitoring there of?
15. Would the proponent be willing to pass on the specifications of the chosen turbine for the community to have it independently assessed?
16. What has the proponent had to compromise on in this whole process for the betterment of the community?
The way we see it is that none of our community concerns have been considered in real terms.
17. What is to become of the Woolsthorpe community benefit fund?
Is the Moyne Shire attempting to utilise these funds for other than Woolsthorpe's benefit?
18. Who monitors the numbers and species of dead birds/bats etc and how often?
How and when is this reported? Is it via the WWF website or information passed onto the community through the CEC. Or does it never see the light of day?
19. What will the turbine have to suppress a fire in the event of one beginning during its' lifespan?
20. It may be public knowledge but will the wind farm financiers be put on the WWF website for the community to see?

Just so the committee is under no illusions about the approval of the amendment and the building of this wind farm on our landscape.

Many many people in the community are devastated by the complete intrusion and negative impact these turbines are going to have on our lives and daily outlook on our landscape. Just take a look at the few Hawkesdale turbines already built. We have been told the cumulative effect will be insignificant. How will the 36 combined turbines look to us here in Woolsthorpe?

We believe our town and district will suffer in the long run with negative implications slowly but surely taking hold.

The wind farm and its' supporters do not understand and I guess care as they do not live next to a wind farm and an overseas company has no interest in being a fair citizen as there is money to be made from our suffering. No community benefit fund will compensate us for this.

If this is our future, god help us.

Attachment 4: Neighbor agreement payment model

WOOLSTHORPE

WIND FARM

October 2023

NEIGHBOUR COMPENSATION



Dear Homeowner

Woolsthorpe Wind Farm would like to notify you about the payment model that will be applicable for near-neighbour landowners of the project.

Woolsthorpe Wind Farm recognises that the impacts of a wind farm are felt more by those who live closest. Whilst programs such as the Community Benefit Fund seek to distribute benefits to all members of the community (by Woolsthorpe Wind Farm funding community led initiatives and projects), we believe it is fair and reasonable to additionally compensate those closest.

To acknowledge this, Woolsthorpe Wind Farm will make a one-off payment at Financial Close to near-neighbour landowners whose resident dwelling is within 3.1 km of a wind turbine or turbines.

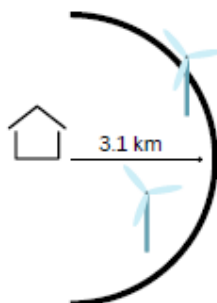
Woolsthorpe Wind Farm would like to stress that this is not a “gag” agreement. Neighbours will not need to sign away any right to complain in future. This is a payment of good will.

The final turbine locations will be determined following micro-siting of the turbines and subsequent endorsement by the Department of Planning. Once this has occurred, the Project team will be in contact.

The design of this model has sought to compensate those at closest proximity to turbines whilst also ensuring those on the cusp of the 3.1 km range also receive a meaningful amount.

Payment model:

- \$X for the 1st turbine within 3.1 km of a dwelling.
- \$Y for the 2nd turbine within 3.1 km of a dwelling.
- \$Z for each turbine thereafter within 3.1 km of a dwelling.



Example calculation #1

Number of wind turbines within 3.1 km of a dwelling = 1

Payment = \$X.

Example calculation #2

Number of wind turbines within 3.1 km = 2

Payment = \$X (1st WT) + \$Y (2nd WT) = \$X + Y.

Example Calculation #3

Number of turbines within 3.1 km = 5

Payment = \$X (1st WT) + \$Y (2nd WT) + \$Z (3rd WT) + \$Z (4th WT) + \$Z (5th WT)
= \$X + Y + 3Z.

For any enquiries, contact: contactus.woolsthorpe@elecnor.com

THANK YOU