
Woolsthorpe Wind Farm Community Engagement Committee

Meeting date 15 July 2022
Meeting time and location Zoom

1. Welcome

2. Attendees

Cr Jim Doukas, Acting Chair
Glenn Britnell, Community Representative
Simon Poynton, Community Representative
James Taylor - Development Manager, Enerfin
Mark Thompson – ICA Partners
Alistair Craib – ICA Partners
Katelyn Nash – Planner, KLM Spatial (guest)
Vicki Askew-Thornton, Senior Energy Projects Liaison Officer, Moyne Shire (non-member)

3. Apologies

Cr Damian Gleeson
John Murphy, Community Representative
Terri Barnes, Community Representative

4. Declarations of interest

Nil.

5. Minutes of previous meeting

Moved by Glenn Britnell, seconded by Alistair Craib that the minutes of the CEC meeting held on 3 June 2022 be accepted. **CARRIED**

6. Business arising from previous Minutes

- 6.1 A project newsletter has been produced and will be mailed out to all landholders within 5km of the project boundary, plus all Woolsthorpe residents. The project website has also been updated. Council can drop off some printed copies to the school, hotel and general store next week.

- 6.2 Request for Enerfin to undertake background noise testing at additional locations including to the south and east of the site.
(Refer to Project Update 9.1)
- 6.3 The community funding pool would increase with the CPI.

7. Correspondence Incoming

| Date received | Item | Attachment Number |
|---------------|---|-------------------|
| 1 June | Information from Council on its draft wind farm position consultation process | |
| 10 June | Reminder: <i>Community Engagement Committee Wind Farm Information Session</i> , 30 June in Koroit | |
| 14 July | Latest project newsletter | 1 |

8. Correspondence Outgoing

Nil.

9. Reports

9.1 Project Update (ICA Partners - ICA):

Amendment Application:

- The amendment application for 13 turbines with a tip height of 230 metres has been lodged with the Minister for Planning.
- DELWP has 28 days to review the application and accompanying information, and may request further information during that time.
- The project website has been updated with information regarding the amendment application.

Background Noise Testing Locations:

- ICA explained that the 3 locations selected for background noise testing were chosen in accordance with the requirements of the NZ Noise Standard, and are still relevant after the remodelling that has been done for the taller more modern turbines.
- The community representatives raised that nevertheless, for community piece of mind additional locations should be tested.
- Following discussion, ICA agreed to seek to do more background noise monitoring at a near neighbour's dwelling to the south west of the site, and at the Woolsthorpe Primary School to the west of the site.

Newsletter:

- Some improvements to the newsletter were requested including the distances shown on the map and in the text, adding the distance to the Woolsthorpe Store, and clarifying what the 'edge of Woolsthorpe' means.
ICA will update the newsletter and reissue it.

9.2 Community Representatives

- Simon reported that not many people in the school community including the School Council know about the status of the project. He asked ICA for better engagement with the school.
Simon asked ICA to consider enabling some funding opportunities for the school sooner, rather than waiting until the wind farm is operating. The community representatives agreed this would show goodwill to the community.
ICA agreed to consider a 'transitional fund' and report back to the next meeting.
- A discussion was held on the geographical scope of the Community Fund. It was agreed that general publicity about the fund should refer to Woolsthorpe and the district around the site, and that once the time comes, a very clear Terms of Reference should be developed including geographical scope and the funding criteria.
ICA noted that the fund committee would include 2 Woolsthorpe community representatives.

9.3 Council

- Around 22 people attended the recent CEC Community Representative Information Session in Koroit, including Glenn and Terri from this CEC. An email will be sent to all CECs asking for feedback, providing access to the DELWP and EPA presentations, and answers to some questions taken on notice from the session.
- A report is being prepared for Council regarding the results of its recent consultation process for Council's draft position statement regarding wind farms in Moyne.

10. General business

Nil.

11. Date of next CEC meeting:

Friday 26 August 2022, 10.00 at the National Hotel Woolsthorpe

Confirmed this / /

Chair

Minutes are to be registered in Moyne Shire's electronic document management system by the committee reporting officer immediately following the Minutes' confirmation and signing

Attachment 1: Project Newsletter



1 MESSAGE FROM THE PROJECT TEAM

Thank you everyone for your patience! It has has been a while since our last update on the Project, and a bit has been happening behind the scenes, so we are pleased to now be able to share this summary newsletter with you.

In June, our (Enerfin & ICA) Project team visited Woolsthorpe and many neighbours to provide an update on the Project. These were productive meetings and we thank everyone for making time to see us. We also enjoyed the social aspect - checking in with how everyone has been and the kind country hospitality, which included many warm cups of tea & coffee on chilly days!

As communicated during our visit, the turbine model we previously planned to use for the Project was unfortunately withdrawn from offer by the supplier (SGRE). This was disappointing, and meant we had to carefully review and rethink the Project. The silver lining to this was that this also presented us an opportunity to improve the Project.

Our conclusion was that the best path forwards was to apply to amend our Planning Permit (approved in 2018) to allow a new wind farm design comprised of more modern turbines. Modern turbines are larger and, crucially, more efficient, meaning fewer turbines would now be required (13 instead of 20). We were also able to incorporate feedback, that had previously been shared with us, into the new turbine layout and when we communicated this during our visit in June, we were happy that this was broadly well received.

Last week we submitted our permit amendment application to DELWP and the Minister for Planning for their review and assessment.

Finally, we are planning to run several community information sessions in mid-September where we can share and discuss more information about the Project and answer any queries. We will be in touch about this and until then we encourage anyone with questions relating to the project to please reach out via email, the toll free number or through our website. Stay well and stay safe.

IN THIS NEWSLETTER

- 1 - MESSAGE FROM THE PROJECT TEAM
- 2 - WHAT'S BEEN HAPPENING
- 3 - SITE MAP AND LAYOUT
- 4 - UPCOMING ACTIVITIES
- 5 - FAQ'S

CONTACT US



Toll Free Number:
1800 966 095

www.woolsthorpewindfarm.net
contactus.woolsthorpe@elec.nor.com

Don't forget to sign up to our mailing list (at the project's website) for updates and more!



2 WHAT'S BEEN HAPPENING?

Evolution of the project and on-going workstreams

DEVELOPMENT

The Project has an approved planning permit with the plans required to satisfy the Planning Permit most recently lodged to the Department of Environment, Land, Water and Planning (DELWP) and endorsed by the Minister for Planning on the 18th October 2019. All endorsed documents can be found on the project's website under "Overview and Useful Links".

In response to the withdrawal of offer for the SGRE turbine previously planned for the Project, we are now seeking to amend our planning permit to allow a new wind farm design that includes more modern and efficient turbines. The new permit would provide 13 turbines (compared to the already approved 20 turbines) with a tip height of 230 m (compared to the approved 168 m). The turbine ground clearance (height above ground to the lowest point of the turbine blades) would increase from 35 m to at least 66 m which is expected to have positive impacts from an avifauna perspective.

Last week, we submitted our application to DELWP and the Minister for Planning for their initial assessment. Their initial assessment is expected to take a couple of months and, through this period, we will continue to engage with DELWP to ensure they receive all information required to conduct their review. Once complete, DELWP will publicly exhibit our amendment application online for interested members of the community. This will include making available all of the documents and studies that formed the basis of our application.

COMMUNITY

Whilst DELWP is conducting their review, our Project team will continue to engage with the community about the new wind farm design. We will do this through our Community Engagement Committee (CEC) meetings and in person at our upcoming information sessions in mid-September (exact date TBA). Note, we will reach out to everyone about these information sessions in due course, including the date and times.

Until then, the best way to understand the new wind farm design and the changes from the previous design is to refer to the next three pages, where we have included some site maps showing the new proposed turbine layout. We have also included a comparison plan which provides a good illustration of changes from the already approved layout of 20 wind turbines to our new proposed layout of 13 turbines.

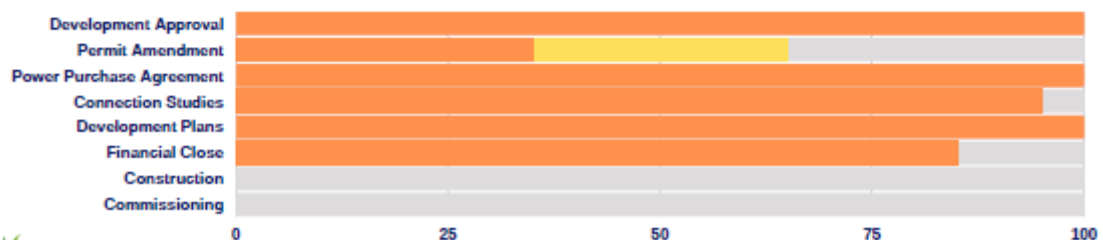
To keep up to date with general project information, you can visit our website (<https://www.woolsthorpewindfarm.com>) or reach out to us via email, phone or through your community representatives on the Community Engagement Committee.

CONNECTION

As the developers and owners of the Woolsthorpe Wind Farm, we need to have complete certainty that it will connect without compromising the stability of the grid and availability of the electricity supply. For this reason, the connection process has required significant engineering and due diligence work. It is always the last 10% which is the hardest but we have made significant progress in the last few months.

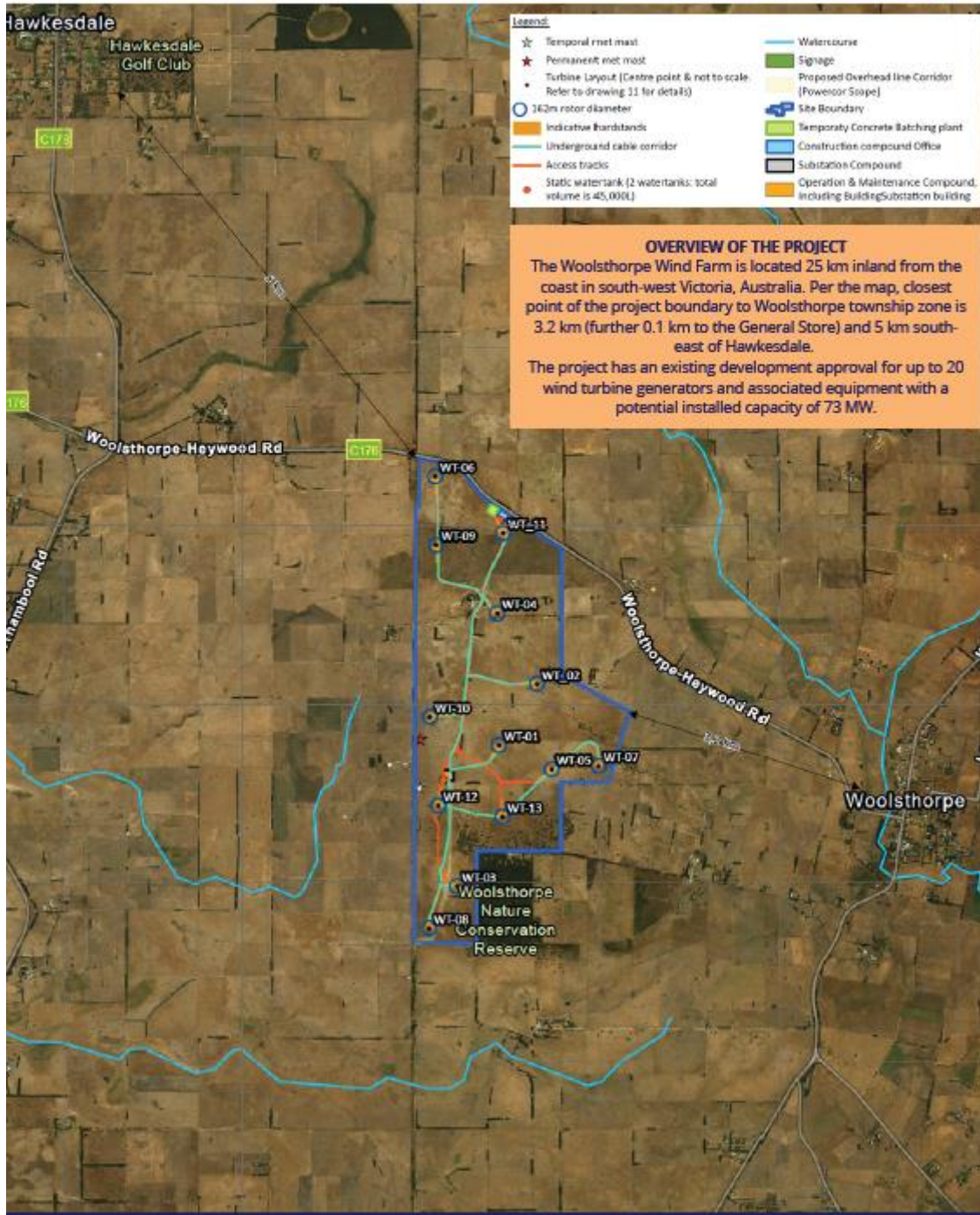
Our remaining work is to ensure that Powercor, as the local distribution utility, and AEMO (Australian Energy Market Operator) are satisfied with the connection solution proposed. The Woolsthorpe Wind Farm has continued to engage with AEMO and Powercor to overcome all issues in the connection application and we look forward to providing an update in the not-too-distant future.

PROJECT PROGRESS



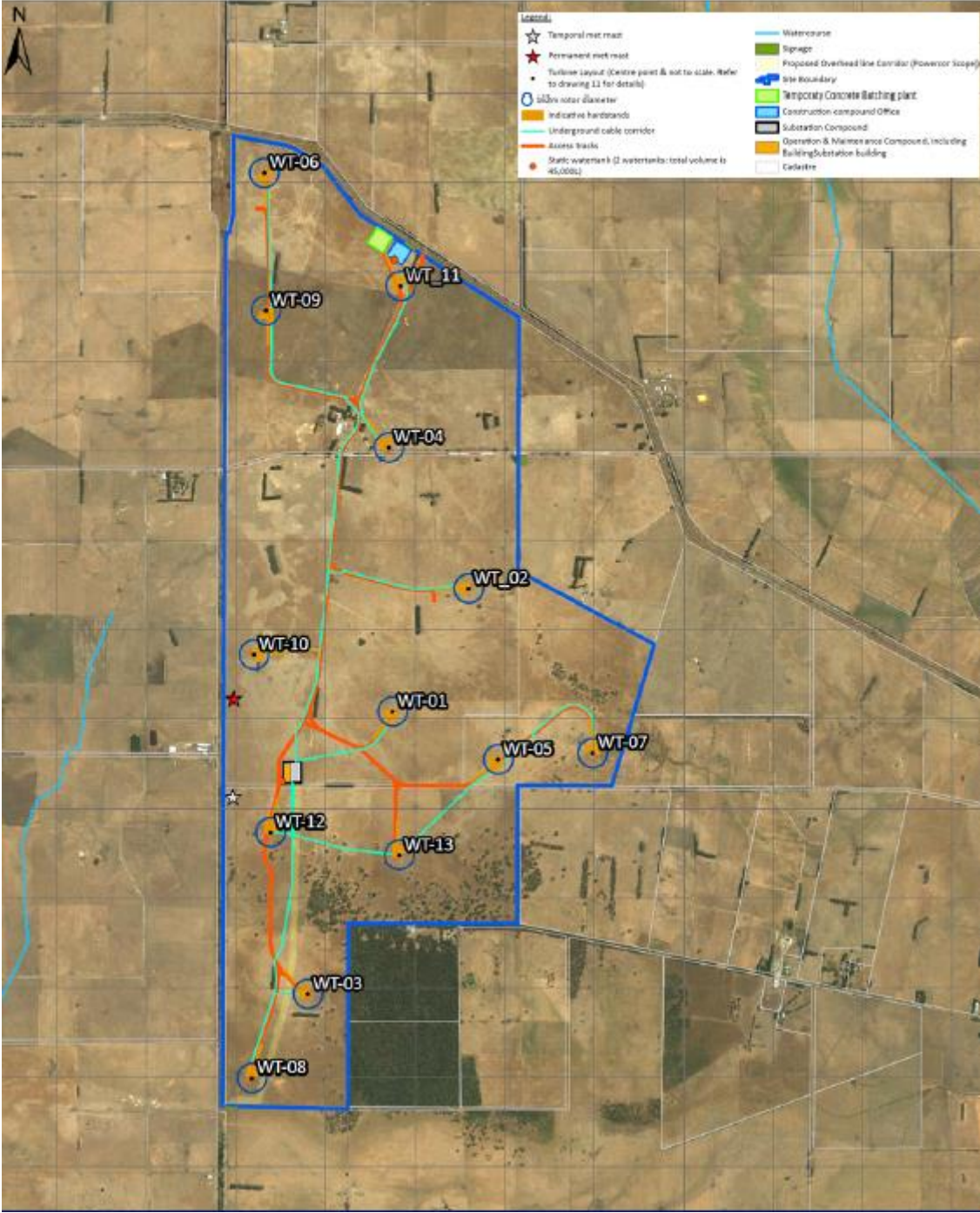
3 SITE MAP AND LAYOUT

NEW PROPOSED LAYOUT



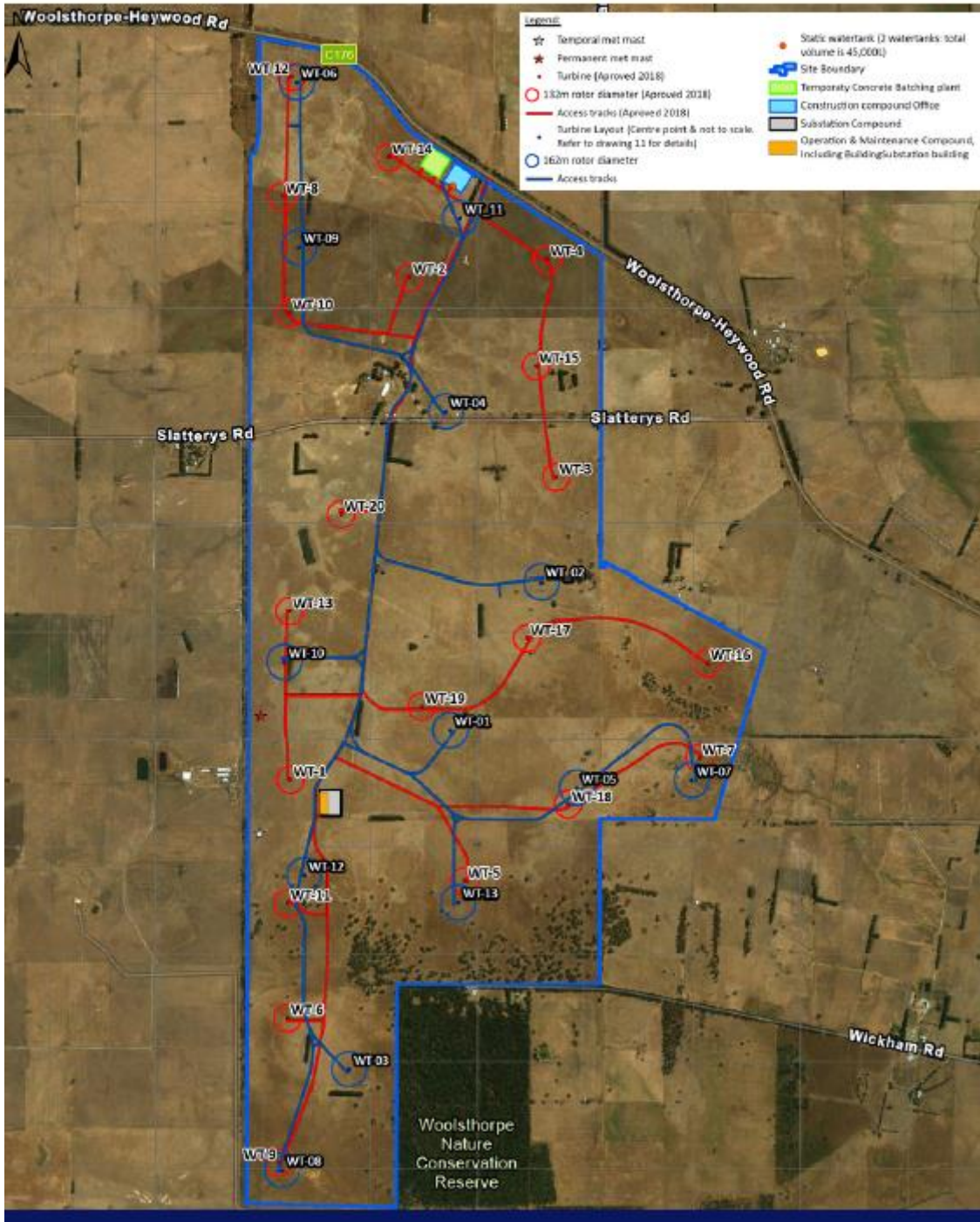
3 SITE MAP AND LAYOUT

NEW PROPOSED LAYOUT (CLOSE UP)



3 SITE MAP AND LAYOUT

LAYOUT COMPARISON (NEW VS APPROVED)



4 UPCOMING ACTIVITIES

COMMUNITY INFORMATION SESSIONS

(DATE TO BE CONFIRMED)

The Woolsthorpe Wind Farm Team will confirm the date and times for our next Community Information Sessions to be held in mid-September.

These sessions will be a great opportunity for members of the community to come and chat to our Project team about the Project, its progress and the expected development timeline. We will hold three sessions across the the course of the day (as suggested below) to allow everyone to attend a session that best fits their schedule.



MID SEPTEMBER 2022
(EXACT DATE TO BE ANNOUNCED)

Enerfin-ICA Partners would like to invite the Woolsthorpe community and residents to attend a Community Drop-in information session held at the

Woolsthorpe Community Hall

Session 1: 10:00 - 12:00

Session 2: 13:30 - 15:30

Session 3: 17:00 - 19:00

Date TBA

This is a great opportunity for the members of the community to get an update on the project and the expected development timeline. People can ask questions and receive answers from the team delivering the project

5 FREQUENTLY ASKED QUESTIONS

IS WIND ENERGY GOOD FOR THE ECONOMY?

Wind energy avoids the external or societal costs associated with conventional resources, namely, the trade deficit from importing foreign oil and other fuels, the health and environmental costs of pollution, and the cost of depleted resources. Wind energy is a domestic, reliable resource that provides more jobs per dollar invested than any other energy technology - more than five times that from coal or nuclear power, according to the U.S. Department of Energy.

WHAT ARE THE GENERAL BENEFITS OF WIND ENERGY?

Wind turbines have many advantages. Wind energy is 100% clean energy that is free from all political, ethical, economic and environmentally damaging problems inherent in coal, oil, gas or nuclear power. Wind energy has none of the major drawbacks inherent in other forms of electricity: no geopolitical risks, no foreign energy dependence, no fuel risk, no exploration, no refineries, no pipelines, no depletion of raw materials and no radioactive waste and virtually no carbon emissions.

DO WIND TURBINES HARM WILDLIFE?

Wind farms are always subject to an Environmental Impact Assessment to ensure that their potential effect on the immediate surroundings, including fauna and flora, are carefully considered before construction is allowed to start. Deaths from birds flying into wind turbines represent only a tiny fraction of those caused by other human-related sources such as vehicles and buildings. It has been estimated that wind turbines in the US cause the direct deaths of only 0.01-0.02% of all of the birds killed annually by collisions with man-made structures and activities.

THANK YOU FROM THE WOOLSTHORPE WIND FARM PROJECT TEAM